

ITEM	PART #	QTY.	DESCRIPTION
1	KC-701	1	VALVE BODY
2	KC-702	1	DIFFUSER/ SEAL HOLDER
3	XXXX	#	XXXX
4	KC-710	1	BALL HOLDER ASSEMBLY
5	KC-711	1	WASHER, SEAL
6	KC-712	3	CUP POINT SOCKET SET SCREW
7	KC-713	1	SNAP-IN PLUG
8	KC-714	1	AIR CYLINDER BODY
9	KC-715	1	LABEL
10	KC-716	1	D-RING
11	KC-717	1	AIR PISTON
12	KC-718	1	D-RING
13	KC-719	1	RETAINING RING
14	KC-720	1	SEAL HOLDER
15	RAU07-34S	1	PUSH LOCK FITTING, 1/8" NPT X 1/4" TUBE, 90° ELBOW
16	F-02500695-SS	1	PLUG, SQUARE HEAD, 1/4" NPT, 304 SS
17	F-02500611-SS	1	HEX NIPPLE, 1/4" NPT, SS
18	F-02500550-SS	1	ELBOW, 1/4" NPT, 2000 PSI, SS
19	F-03750695-SS	1	HEX NIPPLE, 1/4" NPT X 3/8" NPT, SS
20	2222674	1	TIP GUARD & GASKET
21	XHD-XXX	1	TIP, AIRLESS (SEE CHART ON PAGE # 2)
22	KC-722	1	ADAPTER, GUN, DRIP-LESS GUARD
23	6033-2ALZ	1	GUN HANGER POST
24	6032	1	GUN HANGER
25	KC-721	1	TIP WASHER

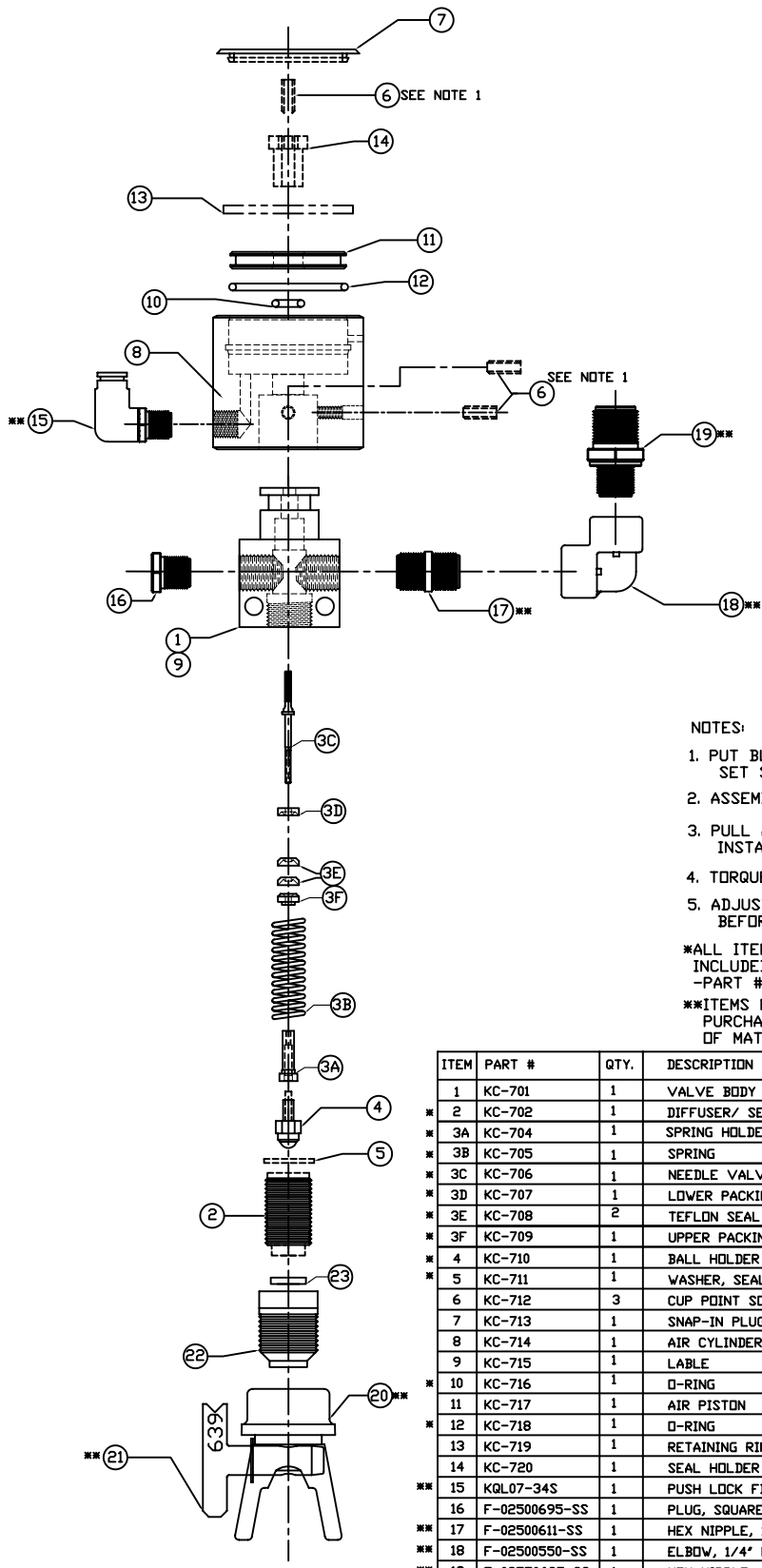
\*\*\*ALL ITEMS MARKED WITH A ASTERISK ARE INCLUDED IN THE KC-700 REPAIR KIT. -PART # KC-700-RBK

\*\*\*ITEMS NOT INCLUDED WITH GUN, MUST PURCHASE SEPARATELY. SEE BILL OF MATERIALS FOR PART NUMBERS

TOLERANCES UNLESS OTHERWISE SPECIFIED:  
 Angular ±2°  
 Fractional ±1/16"  
 X = ±.1  
 XX = ±.01  
 XXX = ±.005  
 XXXX = ±.0015

CONFIDENTIAL  
 THIS DOCUMENT INCLUDING ALL INFORMATION HEREIN IS THE EXCLUSIVE AND CONFIDENTIAL PROPERTY OF ERNEST INDUSTRIES. THIS DOCUMENT IS NOT TO BE COPIED, REPRODUCED, OR DELIVERED TO OTHERS WITHOUT PERMISSION OF ERNEST INDUSTRIES.

Kelly-Creswell 1221 Groop Rd Springfield, OH 45504 937-282-3978		TITLE: <b>KC-700 SPRAY GUN ASSEMBLY</b>	
DRAWN BY: CDV	DATE: 5-28-10	DWG NO./PART NO. KC-700	DESCRIPTION: <b>KC-700 DETAILS</b>
APPROVED BY:	DATE APPROVED:	SCALE: N/A	SIZE: B
		PAGE #: 1-4	REV: A



NOTES:

1. PUT BLUE LOCTITE ON CUP POINT SOCKET SET SCREW (ITEM 6).
2. ASSEMBLE ITEM 3 PER SPEC
3. PULL AWAY BALL (ITEM 4) BEFORE INSTALLING SEAL HOLDER (ITEM 2).
4. TORQUE ITEM 2 TO 25 FT.LB
5. ADJUST ITEM 11 TO MID-POSITION BEFORE LOCKING WITH ITEM 6.

\*ALL ITEMS MARKED WITH A ASTERISK ARE INCLUDED IN THE KC-700 REPAIR KIT. -PART # KC-700-RBK

\*\*ITEMS NOT INCLUDED WITH GUN. MUST PURCHASE SEPERATLY. SEE BILL OF MATERIALS FOR PART NUMBERS

ITEM	PART #	QTY.	DESCRIPTION
1	KC-701	1	VALVE BODY
*	2	1	DIFFUSER/ SEAL HOLDER
*	3A	1	SPRING HOLDER
*	3B	1	SPRING
*	3C	1	NEEDLE VALVE SPRING
*	3D	1	LOWER PACKING NUT
*	3E	2	TEFLON SEAL PACKING
*	3F	1	UPPER PACKING NUT
*	4	1	BALL HOLDER ASSEMBLY
*	5	1	WASHER, SEAL
6	KC-712	3	CUP POINT SOCKET SET SCREW
7	KC-713	1	SNAP-IN PLUG
8	KC-714	1	AIR CYLINDER BODY
9	KC-715	1	LABLE
*	10	1	O-RING
*	11	1	AIR PISTON
*	12	1	O-RING
13	KC-719	1	RETAINING RING
14	KC-720	1	SEAL HOLDER
**	15	1	PUSH LOCK FITTING, 1/8" NPT X 1/4" TUBE, 90° ELBOW
16	F-02500695-SS	1	PLUG, SQUARE HEAD, 1/4" NPT, 304 SS
**	17	1	HEX NIPPLE, 1/4" NPT, SS
**	18	1	ELBOW, 1/4" NPT, 2000 PSI, SS
**	19	1	HEX NIPPLE, 1/4" NPT X 3/8" NPT, SS
**	20	1	TIP GUARD & GASKET (SEE CHART ON PAGE 2)
**	21	1	TIP, AIRLESS (SEE CHART ON PAGE 2)
22	KC-722	1	ADAPTER, GUN, DRIP-LESS GUARD
23	KC-721	1	TIP WASHER

TOLERANCES UNLESS OTHERWISE SPECIFIED:  
 Angular ±2°  
 Fractional ±1/16"  
 .X= ±1  
 .XX=±.01  
 .XXX=±.005  
 .XXXX=±.0015

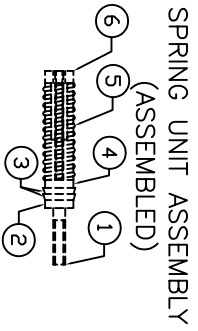
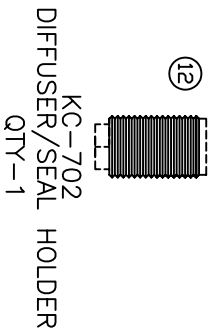
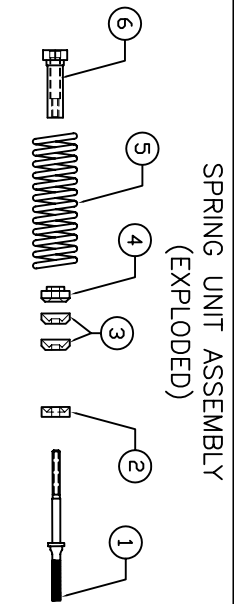
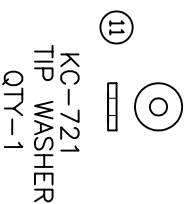
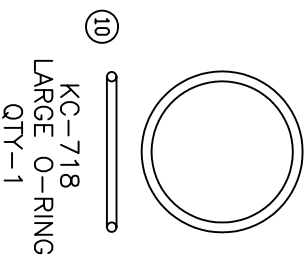
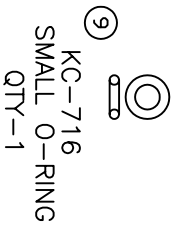
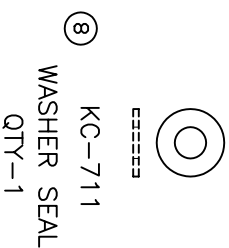
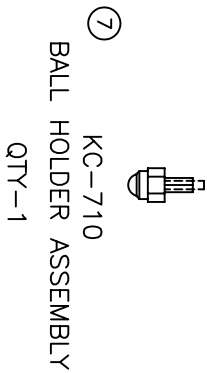
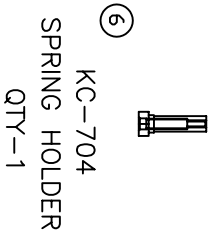
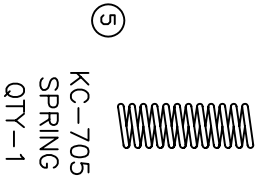
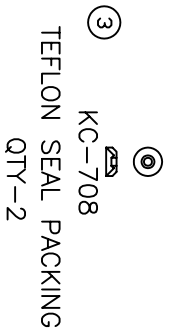
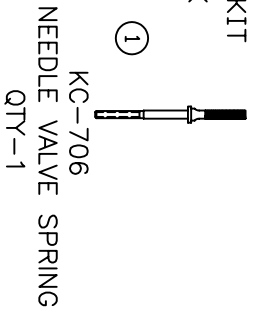
CONFIDENTIAL  
 THIS DOCUMENT, INCLUDING ALL INFORMATION HEREIN, IS THE EXCLUSIVE AND CONFIDENTIAL PROPERTY OF ERNEST INDUSTRIES. THEREFORE THIS DOCUMENT IS NOT TO BE COPIED, REPRODUCED, OR DELIVERED TO OTHERS WITHOUT THE EXPRESS WRITTEN PERMISSION OF ERNEST INDUSTRIES.

Kelly-Creswell  
 1221 Groop Rd.  
 Springfield, OH 45504  
 937-323-9978  
**KC** Since 1937

DRAWN BY: CDW  
 DATE: 5-28-10  
 APPROVED BY: [Signature]  
 DATE APPROVED: [Signature]

TITLE: KC700 SERIES ASSEM EXPLODED  
 DESCRIPTION: 700 SERIES GUN  
 DWG NO./PART NO. KC-700  
 SCALE: N/A  
 SIZE: B  
 PAGE #: 2-4  
 REV: A

KC-700 REBUILD KIT  
PN - KC-700-RBK



TOLERANCES UNLESS OTHERWISE SPECIFIED:  
Angular ±2°  
Fractional ±1/16"  
X = ±.1  
XX = ±.01  
XXX = ±.005  
XXXX = ±.0015

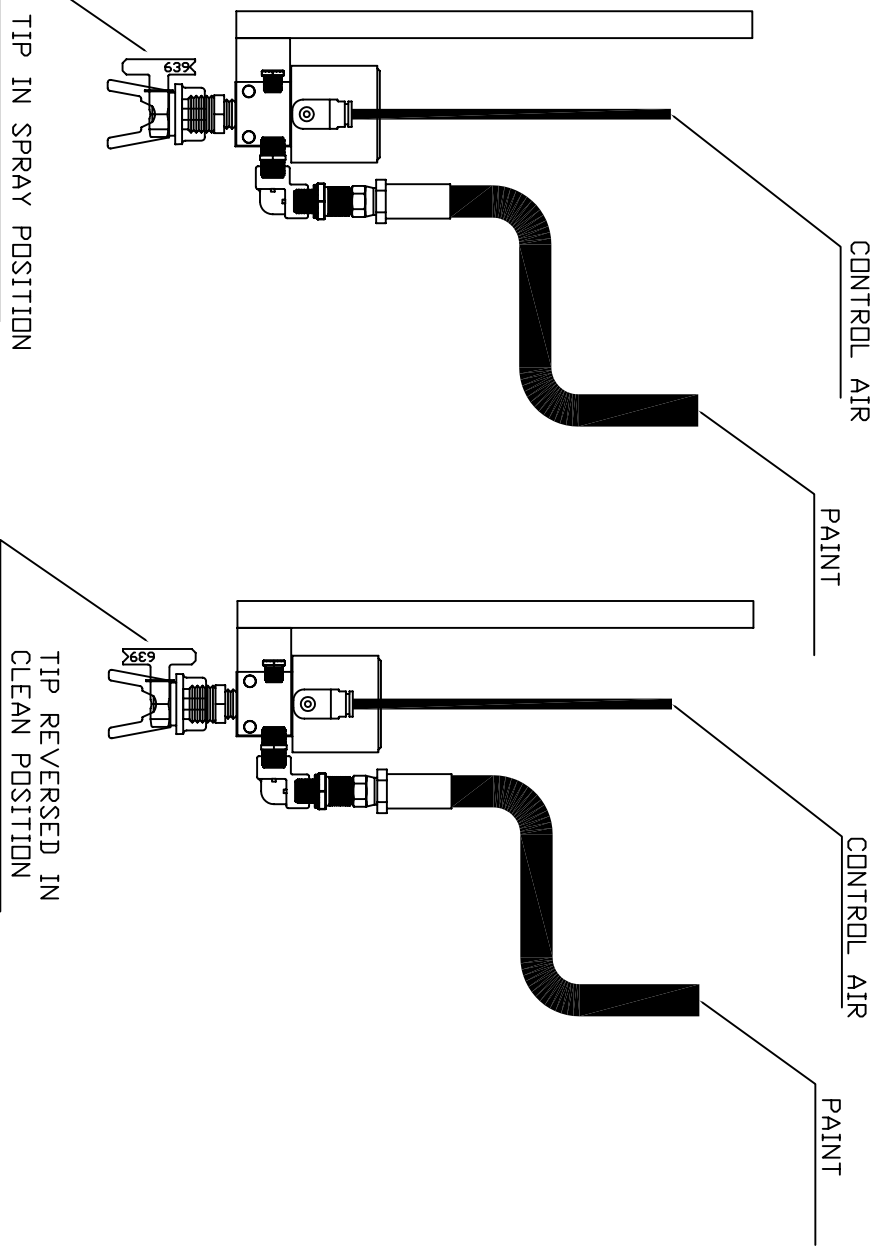
CONFIDENTIAL  
THIS DOCUMENT INCLUDING ALL INFORMATION HEREIN IS THE EXCLUSIVE AND CONFIDENTIAL PROPERTY OF ERNEST INDUSTRIES. THIS DOCUMENT IS NOT TO BE COPIED, REPRODUCED, OR DELIVERED TO OTHERS WITHOUT PERMISSION OF ERNEST INDUSTRIES.

Kelly-Creswell  
1221 Groop Rd.  
Springfield, OH 45504  
937-383-3978  
Since 1937

DRAWN BY: CDV  
APPROVED BY:

DATE: 8-27-10  
DATE APPROVED:

TITLE: KC-700  
DESCRIPTION: REBUILD KIT  
DWG NO./PART NO.: KC-700-RBK  
SCALE: N/A  
SIZE: B  
PAGE #: 3-4  
REV: A



PORTABLE MACHINE TIPS (KC-700)	
TIP NUMBER	LINE SIZE AND RECOMMENDED USAGE
HDP1-203	2" ATHLETIC LINE AND SMALL STENCILS
HDP1-211	2-4" ATHLETIC LIGHT FILM THICKNESS
HDP1-217	4-6" LINE (MEDIUM FILM THICKNESS)
HDP1-219*	4-6" LINE (NORMAL FILM THICKNESS)
HDP1-315	4-8" LINE/CURBS/STENCILS (LIGHT FILM THICKNESS)
HDP1-317	4-8" LINE/CURBS/STENCILS (MEDIUM FILM THICKNESS)
HDP1-319	4-8" LINE/CURBS/STENCILS (NORMAL FILM THICKNESS)
HDP1-517*	10-12" GENERAL SPRAYING AND LARGE STENCILS
HDP1-621	10-14" STOP BARS/STENCILS (HEAVY FILM THICKNESS)
HDP1-721	12-14" STOP BARS/STENCILS/24" LINE W/ 2 GUNS
HDP1-725	12-14" STOP BARS/STENCILS/24" LINE W/ 2 GUNS (HEAVY FILM)
HDP1-01	TIP GUARD

\*INCLUDED WITH EACH GUN INSTALLED ON A PORTABLE STRIPPER

TRUCK MOUNTED MACHINE TIPS (KC-700)				
TIP NUMBER	MINOR	MAJOR	DRIFTCRACK SIZE (IN)	MIL THICKNESS
XHD-437	4"	8"	.037"	15
XHD-439	4"	8"	.039	15
XHD-443	4"	8"	.043"	15
XHD-447	4"	8"	.047"	15
XHD-449	4"	8"	.049"	15
XHD-451	4"	8"	.051"	15
XHD-455	4"	8"	.055"	15
XHD-461	4"	8"	.061"	15
XHD-651	6"	12"	.051"	15
XHD-739	7"	14"	.039"	15
XHD-751	7"	14"	.051"	15
XHD-001	TIP GUARD			

TOLERANCES UNLESS OTHERWISE SPECIFIED:  
 Angular ±2°  
 Fractional ±1/16"  
 X = ±.1  
 XX = ±.01  
 XXX = ±.005  
 XXXX = ±.0015

CONFIDENTIAL  
 THIS DOCUMENT INCLUDING ALL INFORMATION HEREIN IS THE EXCLUSIVE AND CONFIDENTIAL PROPERTY OF ERNEST INDUSTRIES. THIS DOCUMENT IS NOT TO BE COPIED, REPRODUCED, OR DELIVERED TO OTHERS WITHOUT PERMISSION OF ERNEST INDUSTRIES.

Kelly-Creswell 1221 Groop Rd. Springfield, OH 45504 937-288-9798		TITLE: <b>KC-700 SPRAY GUN ASSEMBLY</b>	
DRAWN BY: <b>CDV</b>	DATE: <b>5-28-10</b>	DWG NO./PART NO. <b>KC-700 DETAILS</b>	DESCRIPTION: <b>KC-700 DETAILS</b>
APPROVED BY:	DATE APPROVED:	SCALE:	SIZE:
N/A	N/A	N/A	B
PAGE #: <b>4-4</b>		REV: <b>A</b>	